

What is SonicCell?

Learn and gain from the SonicCell
complete application guide



Sink your hands into the vast world of sound from **SonicCell!**

1 SonicCell is a next-generation sound module that covers a wide range of roles

SonicCell is a desktop sound module that's equipped with the latest sounds driven by a Fantom-class sound engine. It also functions as a USB AUDIO/MIDI interface, and while it offers high performance in music production, its sleek body also makes it easy to transport. So without further ado, let's check out the many possibilities of SonicCell.



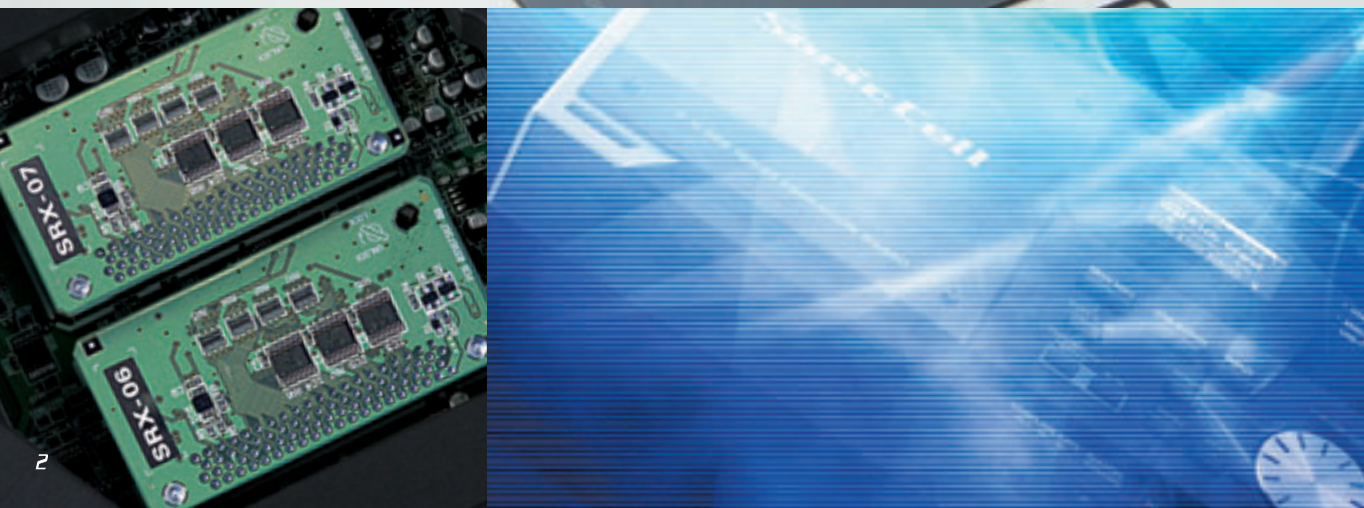
2 Check out the superior Fantom-class sound engine



SonicCell is luxuriously equipped with Roland's latest sound engine, featuring 128-note polyphony and 1,152 ultra high-quality Fantom-class sounds. And if that's not enough, you can choose from Roland's famous SRX wave expansion library for adding even more top-quality sounds to SonicCell. The SRX library has sounds from a wide variety of genres, ensuring that you'll always have the resources you need right at your fingertips.



SRX-06 (left) is devoted to orchestral sounds; SRX-09 (right) is loaded with Asian and Latin ethnic instruments. You can install up to two SRX wave expansion boards.





Use **SonicCell** as a sound module for computer-based music production.

3

In combination with recording software, SonicCell is a music-creation powerhouse



Next, install the bundled recording software SONAR LE and build a comfortable music-production environment. Since SONAR LE has a "plug-in editor" that controls SonicCell directly from software, you can use SonicCell as if it's a software synth. The plug-in editor is compatible with Windows and Mac OS.



Plug-in Editor, SONAR LE Screen



A new music-production world realized

Until now, when using software instruments on your computer, you've surely encountered latency problems, such as sluggish response and late notes when played from an external MIDI keyboard. Not with SonicCell — it provides direct, super-fast response. Simply connect SonicCell to your computer with one USB cable and latency problems are gone. It's reassuring to know that SonicCell's patch layout also conforms to the GM2 MIDI standard.

In fact, pro songwriters and producers around the world rely on the stability provided by an external sound module such as SonicCell, knowing that it has the quality to withstand their heavy working requirements.



Studio-level recording with **SonicCell**.

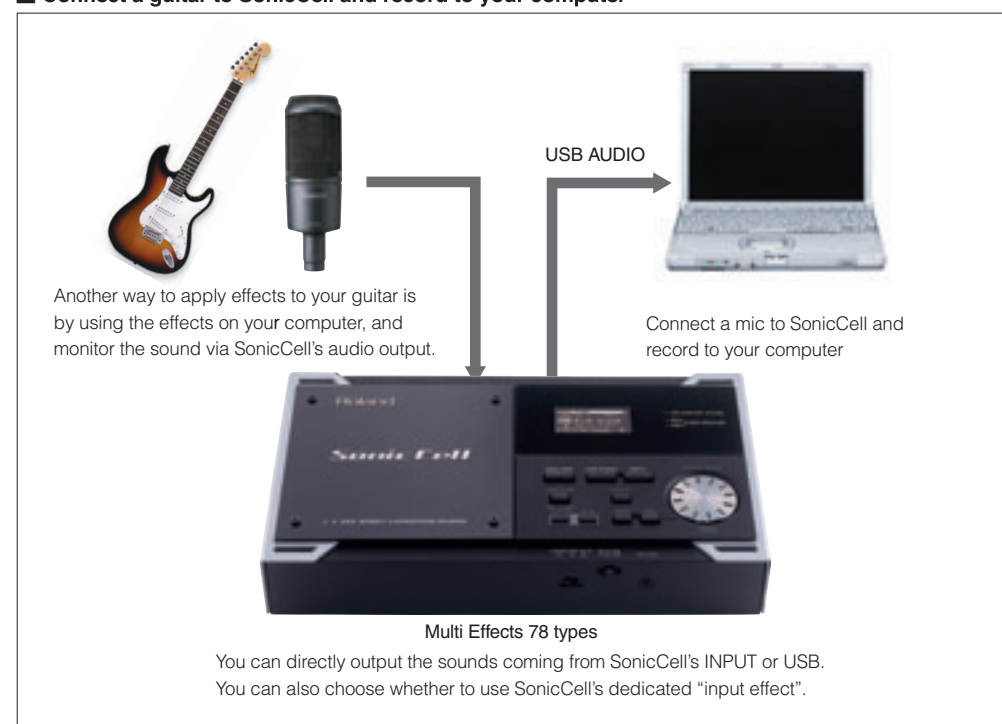
5 Connect mics and guitars to SonicCell and record to your computer!



SonicCell is equipped with a USB audio interface function so you can build a studio-level recording environment with 24-bit /96kHz, high-quality sound.

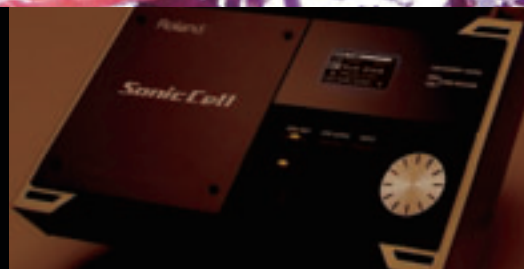
You can also directly connect guitars and microphones to SonicCell with phantom power provided, making it possible to connect condenser mics. SonicCell also has plenty of onboard effects with flexible routing options. For example, while listening to SonicCell's sounds with the effects through your speakers, you can simultaneously record the sounds without the effects so you can edit them later on the computer.

■ Connect a guitar to SonicCell and record to your computer





**SonicCell even
shines onstage!**



6 *Create your own one-person-band
on the streets live!*



You can play back MP3, WAV/AIFF, and MIDI files with SonicCell. If you save your backing-track files to a USB memory stick beforehand, you can add thickness to a band performance with a small number of people. If it's a MIDI file, it's even possible to change the tempo and adjust the effects during playback.



Just insert a USB-memory stick
— it's that simple

7

*Use the Playlist Editor
to manage your song order*



SonicCell is equipped with a smart feature that actually lets you prepare the song order beforehand for your live performance. By using the bundled Playlist Editor on your computer, you can manage the order and volumes of songs that you'll play. With SonicCell, you don't have to bring a computer to the gig!



Playlist Editor Screen

8

*Easy to carry, easy to use
— a delight for the user!*



You can use SonicCell anywhere thanks to its sleek physical design. Optimized for ease of use, SonicCell contains an organic EL display that has a wide viewing angle and high luminance, making it easy to see in daylight or on dark stages. The value dial provides quick and secure control, reducing the likelihood of operational errors onstage. You also have the option of using the dedicated bracket that positions SonicCell to the perfect angle for use on the desktop. Or, in combination with a stand, you can position SonicCell for comfortable operation on the stage.

Use **SonicCell** as a sound-expansion module for your instruments.

9

SonicCell is perfect for live performance and recording.



Connect SonicCell to a digital piano such as Roland's RD-7006X and surround your audience in a multi-layered blanket of sound. Simply connect SonicCell to another MIDI-compatible instrument — and not just keyboards, any MIDI instrument is fair game, such as guitar synths such as the Roland VG-99, desktop samplers such as Roland's MV-8800, MIDI wind controllers, or even Roland's amazing V-Accordion, which can dynamically and naturally change the volume, character, and pitch in correspondence to the movement of the bellows.



●RD-7006X



●V-Accordion

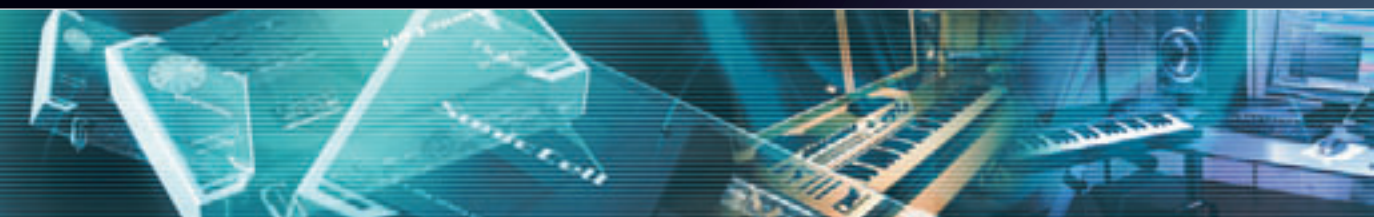


●MV-8800



●VG-99

*From music production to live,
do it all with **SonicCell!***



 **Roland**[®]
— WE DESIGN THE FUTURE —

Visit us online at www.Roland.com

All specifications and appearances are subject to change without notice.
All trademarks are the property of their respective companies.

Printed in Japan Apr. 2008 RAM-4345 GR-NK-DG2 5100000188 08-04-1N