

ROLAND PERCUSSION PRODUCTS



SPD-S SAMPLING PAD



SPD-20 TOTAL PERCUSSION PAD



SPD-6 PERCUSSION PAD



HPD-15 HANDSONIC



Roland®

Add Sampling to Any Percussion Setup!



The SPD-S Sampling Pad is a simple and affordable way to tap into the power of sampling. Six pads and three edge triggers allow drummers to trigger CD-quality samples and create phrase loops complete with pro-quality effects.

Integrates easily with your kit

A great alternative to acoustic triggers and a rack sampler, the SPD-S lets you play up to eight sounds using six durable rubber pads and three superb-feeling edge triggers. There are no complicated settings to make. Just record a sound, assign it to a pad and go. Up to 12 minutes of sampling is provided in Long mode, along with CD-quality sampling and easy editing including Truncate and Trigger Mode functions.

Choose from pre-loaded or sampled sounds

With room for 399 User waveforms, the SPD-S can store plenty of samples. Better still, there are also 181 ready-to-play waveforms pre-loaded into User memory. These sounds are unique to the SPD-S and include a variety of acoustic and electronic drums, percussion, sound effects and phrase loops that can be combined with user samples to create the ultimate drum kit. A sampling CD is also included, making it easy to expand the onboard sounds.

Powerful sound creation tools

With 30 multi-effects algorithms and a unique ambience effect, the SPD-S offers endless sound-sculpting tools. Just add an effect and resample the output for quick and easy triggering! Using the Phrase Maker function, you can create custom phrase loops by resampling a pattern being triggered from the pads. And tweaking a sound or effect during performance is easy—just twist the front-panel knobs or use an optional expression pedal.

Expandable and customizable

The SPD-S has a stereo input and can accommodate up to two trigger units for playing a drum pad in either a head or head/rim configuration. And with MIDI In and Out, it makes a great controller and module as well. Drummers will also appreciate being able to assign two waveforms per pad and switch them via velocity or footswitch. The pads and the optional footswitch also make for an easy way to stop sounds, switch Patches and turn effects On or Off.



MULTI-EFFECTS

1 REVERB+GATE (Reverb+Gate)	11 SIMPLE-COMP (Compressor)	21 RADIOTUNING (Radio Tuning)
2 DLYEDREVERB (Delayed Reverb)	12 COMP-ENHANC (Compressor+Enhancer)	22 RINGMODULAT (Ring Modulator)
3 STEREODELAY (Stereo Delay)	13 2BAND-COMP (2Band Compressor)	23 PITCHSHIFT (Pitch Shifter)
4 SYNC-DELAY (Sync Delay)	14 4BAND-PEQ (4Band Parametric Equalizer)	24 PITCHBENDER (Pitch Bender)
5 TAPE-ECHO (Tape Echo)	15 FILTER	25 OCTAVE
6 CHORUS	16 ISOLATOR	26 VOICETRANS (Voice Transformer)
7 PHASER	17 WAH	27 CENTRCANCEL (Center Canceled)
8 FLANGER	18 OVERDRIVE	28 SYNTH-PERC (Synthesizer Percussion)
9 STEPFLANGER (Step Flanger)	19 DISTORTION	29 SHORT-LOOPER (Short Looper)
10 TREMOLO/PAN	20 LO-FI (Lo-Fi Processor)	30 SLICER

PRE-LOADED SOUNDS

001 Moon Drs	029 16BIEnd	051 Haaiay	086 CowbBrng	133-135 Xsttk	x 3
002 Moon Bas	030 16BSnr	052 BasSlide	087 CowbMmbo	136 808Claps	
003-004 Moon Gt x 2	031 16BCKrK		088-089 Agojo x 2	137 909Claps	
005 Moon Vo	-S.E.-		090 SighBel	138 110Claps	
006 JzStpDrs	032-033 AirDrft x 2	-Percussion-	091-092 AnklBed x 2	139-140 HndClap x 2	
007 JzStpBas	034 SuperLow	053-054 WndChim x 2	093 Shaker	141 FngSnap	
008 JzStpChd	035 RevoDown	055 PinChime	094 ShakeEgg	142-146 clubKik x 5	
009 JzStpPad	036 SwepNoiz	056-057 BelTree x 2	095 Maracas	147-148 808Kik x 2	
010 JzStpMel	037 VerbyHlt	058-059 Crotale x 2	096-097 Cabasa x 2	149 909Kik	
011 2step Bl	038 RevLASER	060-061 Triang x 2	098-100 Bongo x 3	150 110Kik	
012-013 JnglBt x 2	039 WhtPulse	062-063 AccCym x 2	101-103 Conga x 3	151-152 AcuKik x 2	
014 Xylo Bkg	040 Spersk	064-065 CupChim x 2	104-105 Gong x 2	153-156 clubHH x 4	
015 SynthBkg	041 SidWhstl	066 Gong	106-108 Timble x 3	157-158 808HH x 2	
016 Org Bkg	042 NoiseTap	067 Tamtam	109-112 SpokTom x 4	159-160 909HH x 2	
017 HipHipBkg	043 Dolphin	068-070 Block x 3	113-116 Claves x 2	161-162 110HH x 2	
018 Dldgerdp	044 Scratch	071-072 Claves x 2	073 Cricket	163-165 AcuHH x 3	
019 BongoPtn	045 Hi-O	074 FlexMtl	075 MtlCrash	166 110 Cym	
020 CongaPtn	046 Spd-S	076 Ratchel	117-125 clubSnr x 9	167-169 Splash x 3	
021 ShakrPtn	047 Welcome	077 Vibrslp	126 808Snr	170-172 Crash x 3	
022 TablaPtn	048 ComeOn!	078-081 Tmbrn x 4	127 909Snr	173 China 16	
023-025 16BlPtn x 3	049 UGotGrv	082-083 Cowbell x 2	128 110Snr	174-175 Ride x 2	
026-028 16BFlt x 3	050 Yeaahh	084-085 CowbJam x 2	129 eSnr	176-178 808Tom x 3	
			130-132 AcuSnr x 3	179-181 AcuTom x 3	

SAMPLING MODE/TIME

	Internal (approx.)	CompactFlash (approx.)					
		16MB	32MB	64MB	128MB	256MB	512MB
LONG	12 min.	12 min.	24 min.	48 min.	96 min.	193 min.	386 min.
STANDARD	6 min.	6 min.	12 min.	24 min.	48 min.	96 min.	193 min.
FINE	3 min.	3 min.	6 min.	12 min.	24 min.	48 min.	96 min.

Convenient CompactFlash storage

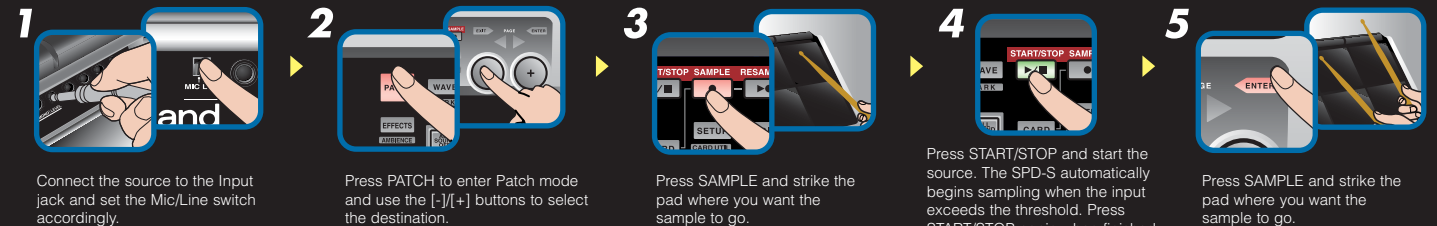
The SPD-S works with readily available CompactFlash media—making it easy to expand the onboard sampling time, store custom sounds, and even import or export .WAV/AIFF files using your Mac or PC.



*Please contact your authorized Roland dealer regarding compatibility of CompactFlash media.

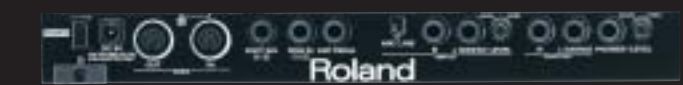
Sampling is easy!

Follow these simple steps to record and play a sound.



SPD-S SAMPLING PAD

REAR VIEW



SPECIFICATIONS

• Pads Built-in Pads: 9 • Maximum Polyphony 8 voices • Sampling Mode Fine/Standard/Long • Sampling Frequency 44.1 kHz • Input Level Line: -10 dBu, Mic: -50 dBu • Input Impedance 10 k ohms (LINE/MIC) • Output Level Output: -10 dBu • Output Impedance Output: 1 k ohms Headphones: 47 ohms • 0 dBu = 0.775 Vrms • Memory Patches: 128 Waves (User): 399 (Pre-loaded Sound 181), Card: 500 • Maximum Sampling Time 12 min. approx. (Internal Memory, Long Mode) • Effects Multi-Effects (30 Type) + Ambience (System) • Display 16 characters, 1 line (backlit LCD) • Connectors Output Jacks (L/Mono, R, 1/4 inch phone type), Input Jacks (L/Mono, R, 1/4 inch phone type) *LINE/MIC selectable, Headphones Jack (Stereo 1/4 inch phone type), Trigger Input Jack (1/4 inch TRS phone type), Expression Pedal Jack (1/4 inch TRS phone type), MIDI Connectors (IN, OUT), Footswitch Jack (1/4 inch TRS phone type), CompactFlash Card Slot • Power Supply DC 9 V AC Adaptor • Current Draw 1,000 mA • Dimensions 342 (W) x 282 (D) x 83 (H) mm / 13-1/2 (W) x 11-1/8 (D) x 3-5/16 (H) inches • Weight 2.1 kg / 4 lbs 11 oz (excluding AC Adaptor) • Accessories Owner's Manual, AC Adaptor (ACI-120C/ACI-230C/ACB-230E/ACB-240A), Sampling CD, Slit Tape, Screws: 2, Hexagon Wrench

*The SPD-S's CompactFlash file system is developed by Kyoto Software Research, Inc. Fugue ©1999-2003 Kyoto Software Research, Inc. All rights reserved.

Innovative Percussion Pads for Stage and Studio.



SPD-6 PERCUSSION PAD

REAR VIEW



SPECIFICATIONS

• **Max. Polyphony** 4 voices • **Number of Instruments** 113 • **Internal Memory** Preset: 16, User: 16
 • **Number of Pads** 6 • **Connectors** OUTPUT 1 (PHONES) / OUTPUT 2 (MONO), Pedal SW 1/2 (for DP-2, FS-5U) for Kick/Hi-Hat control, MIDI OUT, AC Adaptor • **Switches** SENS, POWER, BANK x4, NUMBER x4 - Control Volume • **Power Supply** DC 9V dry battery (AA type x6) or AC Adaptor (BOSS PSA series) • **Current Draw** 100mA • **Dimensions** 318 (W) x 241 (D) x 67 (H) mm / 12-9/16 x 9-1/2 x 2-11/16 inches • **Weight** 1.6 kg, 3 lbs. 9 oz. (incl. Batteries) • **Accessories** MIDI cable, Battery AA type x6 • **Options** PSA-Series AC Adaptor (BOSS)

Play it by hand or with sticks

Thanks to its Sensitivity Selection switch, the SPD-6 can be played by hand or using drum sticks. Its compact and easy-to-use design makes it a great choice not only for drummers, but for anyone who wants to add 113 high-quality drum sounds to their music. A total of 16 Preset and 16 User Patches are provided, which can be played using the six rubber pads.

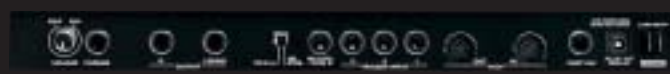
Compact design with room to grow

By connecting two optional footswitches, you can turn the SPD-6 into a super compact and portable electronic drum kit. It even works as a MIDI controller and sound module! Best of all, the SPD-6 can run on AC or battery power, so you can take it anywhere. There's never been an easier way to bring electronic percussion into your music.



SPD-20 TOTAL PERCUSSION PAD

REAR VIEW



SPECIFICATIONS

• **Max. Polyphony** 14 voices • **Number of Instruments** 700 • **Internal Memory** 99 Patches, 8 Patch Chains • **Sound Parameters** Instrument, Level, Pitch, Decay, Pan, Curve, Effect Send Level • **Effects** Reverb, Delay, Chorus, Flanger • **Number of Pads** 8 • **Display** 7-segment, 3-character LED • **Connectors** Output (L/Mono, R), Phones (Stereo), External Trigger Input* x 3 (Dual), Hi-Hat Control/Trigger4 Input* (Dual), MIDI (In, Out), Footswitch (Dual), AC IN *Trigger inputs 1 and 2 accept rim shots from the PD-7, -9, -80R and -120 while inputs 3 and 4 accept rim shots from the PD-7 and -9. • **Power Supply** AC12V, AC Adaptor • **Current Draw** 420mA • **Dimensions** 450 (W) x 350 (D) x 70 (H) mm / 17-3/4 (W) x 13-13/16 (D) x 2-13/16 (H) inches • **Weight** 2.8 kg / 6 lbs. 3 oz. (excl. AC Adaptor) • **Accessories** BOSS BRA-Series AC Adaptor, Slit Tape

Flagship sounds and features

The SPD-20's sound set includes everything from ethnic and world percussion instruments to classic and modern acoustic and electronic drum sounds—700 sounds total! Out of the box, you get 99 Preset Patches and six rhythm loops that can be played via eight high-quality pads with natural response—even when playing with common drumming techniques like rolls and flams.

Ininitely expressive

Four external dual-trigger inputs make the SPD-20 compatible with a dedicated hi-hat or kick drum controller and any of Roland's drum pads (including V-Pads™). The trigger inputs can also be used with acoustic drum triggers for triggering acoustic drums. Other noteworthy features include a velocity-sensitive Layer function, onboard effects and MIDI connections for using the SPD-20 as a controller or sound module.

Preset Instruments

SPD-20

Bass Drum (Kick) b01-b03 Dry Kick x 3 b04 Meat Kick b05 Pillow Kick	127-128 Room Tom x 2 129-130 Acoustic Tom x 2 131-132 TR-909 Tom x 2 133-134 TR-909 Tom x 2	L33 Vibra Slap L34-L38 Agogo Cabasa x 5 L39 L40-L45 Cuica x 6 L46-L52 Panderiro x 7 L53-L57 Surdo x 5 L58-L61 Tamborim x 4 L62-L65 Samba Whistle x 4 L66 Cox x 1 L67-L70 Berimbau x 4 L71-L74 Caixa x 4 L75 Rain Stick L76 Samba Bateria L77 Samba Loop (*2) L78 Shaker Loop (*2)	F28-F31 Reik Bendir x 4 F32 Ball Cymbal F33 Dawul F34 [Australia] F35 Clapstick F36 Boomerang F37 Bloom Bell F38 (Africa) F39 Afro Loop (*2)	J45-J46 Chanchan x 2 J47-J48 Ball Cymbal x 2 J49 Thai Gong J50-J51 Jaws Harp x 2	M24 Yang Qin [Southeast Asia] M25 Bonang M26 Gender M27 Saron M28 Angklung M29-M30 Gamelan x 2 M31 Triangle M32 Iron Hammer M33 Bamboo M34 Drip M35-M36 Synth Strings x 2 M37-M43 Brass x 7 M44-M52 Choir x 9 M53-M59 Bass x 7	d11-d12 Scratch Bass Drum x 2 d13 Scratch Snare d14 Jungle Hat d19-d21 High-Q x 3 d22 Air Blip d23 Techno Snap d24 Organ Chord d25 Distortion Guitar d26 Auh Voice d27 Techno Chord d28 Techno Scene d29 Synth Hi d36 Retro UFO d37 Meta Sweep d38 Bounce d39 Distortion Swish d40 PCM Press d41 Jungle Roll Kick d42 Jungle Roll Snare d43 Techno Loop (*2)	e11-d12 Scratch Bass Drum x 2 e14 Wah Guitar x 4 e15 Telephone x 2 e16 Natural Sounds, Human Voice e17 Doorbell e18 Dog Bark e19 Bird e20 Car Door e21 Car Stop e22 Horn e23 Punch e24 Machine Gun e25 Pistol e26 Siren e27 Owl e28 Woah e29 Oh! e30 Chikil e31 Hey! e32 Out e33 Owl Up e34 Scream e35 Voice Loop (*2) e36 Kick Ambience e37 Reverse Tom
Snare Drum s01-s03 Piccolo Snare x 3 s04-s06 Batech Snare x 3 s07-s09 Acoustic Snare x 3 s10-s12 Steel Snare x 3 s13-s15 Loose Snare x 3 s16-s21 Medium Snare x 6 s22-s26 Concert Snare x 5 s27 Roll Snare s39-s45 Brush Snare x 7 s46 Rock Snare s47 Rooker Snare s48 s49 s70-s71 Jungle Snare x 2 s72-s73 Electronic Snare x 2 s74-s75 TR-908 Snare x 2 s76 TR-909 Snare s77 TR-707 Snare s78 TR-808 Snare s79 CR-78 Snare s80-s86 Cross Stick x 7	127-128 Room Tom x 2 129-130 Acoustic Tom x 2 131-132 TR-909 Tom x 2 133-134 TR-909 Tom x 2	L33 Vibra Slap L34-L38 Agogo Cabasa x 5 L39 L40-L45 Cuica x 6 L46-L52 Panderiro x 7 L53-L57 Surdo x 5 L58-L61 Tamborim x 4 L62-L65 Samba Whistle x 4 L66 Cox x 1 L67-L70 Berimbau x 4 L71-L74 Caixa x 4 L75 Rain Stick L76 Samba Bateria L77 Samba Loop (*2) L78 Shaker Loop (*2)	F28-F31 Reik Bendir x 4 F32 Ball Cymbal F33 Dawul F34 [Australia] F35 Clapstick F36 Boomerang F37 Bloom Bell F38 (Africa) F39 Afro Loop (*2)	J45-J46 Chanchan x 2 J47-J48 Ball Cymbal x 2 J49 Thai Gong J50-J51 Jaws Harp x 2	M24 Yang Qin [Southeast Asia] M25 Bonang M26 Gender M27 Saron M28 Angklung M29-M30 Gamelan x 2 M31 Triangle M32 Iron Hammer M33 Bamboo M34 Drip M35-M36 Synth Strings x 2 M37-M43 Brass x 7 M44-M52 Choir x 9 M53-M59 Bass x 7	d11-d12 Scratch Bass Drum x 2 d13 Scratch Snare d14 Jungle Hat d19-d21 High-Q x 3 d22 Air Blip d23 Techno Snap d24 Organ Chord d25 Distortion Guitar d26 Auh Voice d27 Techno Chord d28 Techno Scene d29 Synth Hi d36 Retro UFO d37 Meta Sweep d38 Bounce d39 Distortion Swish d40 PCM Press d41 Jungle Roll Kick d42 Jungle Roll Snare d43 Techno Loop (*2)	e11-d12 Scratch Bass Drum x 2 e14 Wah Guitar x 4 e15 Telephone x 2 e16 Natural Sounds, Human Voice e17 Doorbell e18 Dog Bark e19 Bird e20 Car Door e21 Car Stop e22 Horn e23 Punch e24 Machine Gun e25 Pistol e26 Siren e27 Owl e28 Woah e29 Oh! e30 Chikil e31 Hey! e32 Out e33 Owl Up e34 Scream e35 Voice Loop (*2) e36 Kick Ambience e37 Reverse Tom
Hi-Hat Cymbal h01-h02 Pop Hi-Hat x 5 h06-h10 Real Hi-Hat x 5 h11-h12 Brush Hi-Hat x 2 h26-h29 TR-808 Hi-Hat x 4 h30-h31 TR-909 Hi-Hat x 2 h32-h33 CR-78 Hi-Hat x 2	127-128 Room Tom x 2 129-130 Acoustic Tom x 2 131-132 TR-909 Tom x 2 133-134 TR-909 Tom x 2	L33 Vibra Slap L34-L38 Agogo Cabasa x 5 L39 L40-L45 Cuica x 6 L46-L52 Panderiro x 7 L53-L57 Surdo x 5 L58-L61 Tamborim x 4 L62-L65 Samba Whistle x 4 L66 Cox x 1 L67-L70 Berimbau x 4 L71-L74 Caixa x 4 L75 Rain Stick L76 Samba Bateria L77 Samba Loop (*2) L78 Shaker Loop (*2)	F28-F31 Reik Bendir x 4 F32 Ball Cymbal F33 Dawul F34 [Australia] F35 Clapstick F36 Boomerang F37 Bloom Bell F38 (Africa) F39 Afro Loop (*2)	J45-J46 Chanchan x 2 J47-J48 Ball Cymbal x 2 J49 Thai Gong J50-J51 Jaws Harp x 2	M24 Yang Qin [Southeast Asia] M25 Bonang M26 Gender M27 Saron M28 Angklung M29-M30 Gamelan x 2 M31 Triangle M32 Iron Hammer M33 Bamboo M34 Drip M35-M36 Synth Strings x 2 M37-M43 Brass x 7 M44-M52 Choir x 9 M53-M59 Bass x 7	d11-d12 Scratch Bass Drum x 2 d13 Scratch Snare d14 Jungle Hat d19-d21 High-Q x 3 d22 Air Blip d23 Techno Snap d24 Organ Chord d25 Distortion Guitar d26 Auh Voice d27 Techno Chord d28 Techno Scene d29 Synth Hi d36 Retro UFO d37 Meta Sweep d38 Bounce d39 Distortion Swish d40 PCM Press d41 Jungle Roll Kick d42 Jungle Roll Snare d43 Techno Loop (*2)	e11-d12 Scratch Bass Drum x 2 e14 Wah Guitar x 4 e15 Telephone x 2 e16 Natural Sounds, Human Voice e17 Doorbell e18 Dog Bark e19 Bird e20 Car Door e21 Car Stop e22 Horn e23 Punch e24 Machine Gun e25 Pistol e26 Siren e27 Owl e28 Woah e29 Oh! e30 Chikil e31 Hey! e32 Out e33 Owl Up e34 Scream e35 Voice Loop (*2) e36 Kick Ambience e37 Reverse Tom
Crash Ride Cymbal c01-c04 Crash Cymbal x 4 c25-c27 Madal x 3 c28 Chinese Cymbal x 3 c29-32 Dhol x 4 c33 Tabla Baya Loop (*2)	127-128 Room Tom x 2 129-130 Acoustic Tom x 2 131-132 TR-909 Tom x 2 133-134 TR-909 Tom x 2	L33 Vibra Slap L34-L38 Agogo Cabasa x 5 L39 L40-L45 Cuica x 6 L46-L52 Panderiro x 7 L53-L57 Surdo x 5 L58-L61 Tamborim x 4 L62-L65 Samba Whistle x 4 L66 Cox x 1 L67-L70 Berimbau x 4 L71-L74 Caixa x 4 L75 Rain Stick L76 Samba Bateria L77 Samba Loop (*2) L78 Shaker Loop (*2)	F28-F31 Reik Bendir x 4 F32 Ball Cymbal F33 Dawul F34 [Australia] F35 Clapstick F36 Boomerang F37 Bloom Bell F38 (Africa) F39 Afro Loop (*2)	J45-J46 Chanchan x 2 J47-J48 Ball Cymbal x 2 J49 Thai Gong J50-J51 Jaws Harp x 2	M24 Yang Qin [Southeast Asia] M25 Bonang M26 Gender M27 Saron M28 Angklung M29-M30 Gamelan x 2 M31 Triangle M32 Iron Hammer M33 Bamboo M34 Drip M35-M36 Synth Strings x 2 M37-M43 Brass x 7 M44-M52 Choir x 9 M53-M59 Bass x 7	d11-d12 Scratch Bass Drum x 2 d13 Scratch Snare d14 Jungle Hat d19-d21 High-Q x 3 d22 Air Blip d23 Techno Snap d24 Organ Chord d25 Distortion Guitar d26 Auh Voice d27 Techno Chord d28 Techno Scene d29 Synth Hi d36 Retro UFO d37 Meta Sweep d38 Bounce d39 Distortion Swish d40 PCM Press d41 Jungle Roll Kick d42 Jungle Roll Snare d43 Techno Loop (*2)	e11-d12 Scratch Bass Drum x 2 e14 Wah Guitar x 4 e15 Telephone x 2 e16 Natural Sounds, Human Voice e17 Doorbell e18 Dog Bark e19 Bird e20 Car Door e21 Car Stop e22 Horn e23 Punch e24 Machine Gun e25 Pistol e26 Siren e27 Owl e28 Woah e29 Oh! e30 Chikil e31 Hey! e32 Out e33 Owl Up e34 Scream e35 Voice Loop (*2) e36 Kick Ambience e37 Reverse Tom
Indian Percussion i01 Sarna Bell i02-06 Baya x 5 i07-11a Tabla x 8 i15-i20 Pol Drum x 6 i21-i24 Dholak x 4 i25-i27 Madal x 3 i28 Khole i29-32 Dhol x 4 i33 Tabla Baya Loop (*2)	127-128 Room Tom x 2 129-130 Acoustic Tom x 2 131-132 TR-909 Tom x 2 133-134 TR-909 Tom x 2	L33 Vibra Slap L34-L38 Agogo Cabasa x 5 L39 L40-L45 Cuica x 6 L46-L52 Panderiro x 7 L53-L57 Surdo x 5 L58-L61 Tamborim x 4 L62-L65 Samba Whistle x 4 L66 Cox x 1 L67-L70 Berimbau x 4 L71-L74 Caixa x 4 L75 Rain Stick L76 Samba Bateria L77 Samba Loop (*2) L78 Shaker Loop (*2)	F28-F31 Reik Bendir x 4 F32 Ball Cymbal F33 Dawul F34 [Australia] F35 Clapstick F36 Boomerang F37 Bloom Bell F38 (Africa) F39 Afro Loop (*2)	J45-J46 Chanchan x 2 J47-J48 Ball Cymbal x 2 J49 Thai Gong J50-J51 Jaws Harp x 2	M24 Yang Qin [Southeast Asia] M25 Bonang M26 Gender M27 Saron M28 Angklung M29-M30 Gamelan x 2 M31 Triangle M32 Iron Hammer M33 Bamboo M34 Drip M35-M36 Synth Strings x 2 M37-M43 Brass x 7 M44-M52 Choir x 9 M53-M59 Bass x 7	d11-d12 Scratch Bass Drum x 2 d13 Scratch Snare d14 Jungle Hat d19-d21 High-Q x 3 d22 Air Blip d23 Techno Snap d24 Organ Chord d25 Distortion Guitar d26 Auh Voice d27 Techno Chord d28 Techno Scene d29 Synth Hi d36 Retro UFO d37 Meta Sweep d38 Bounce d39 Distortion Swish d40 PCM Press d41 Jungle Roll Kick d42 Jungle Roll Snare d43 Techno Loop (*2)	e11-d12 Scratch Bass Drum x 2 e14 Wah Guitar x 4 e15 Telephone x 2 e16 Natural Sounds, Human Voice e17 Doorbell e18 Dog Bark e19 Bird e20 Car Door e21 Car Stop e22 Horn e23 Punch e24 Machine Gun e25 Pistol e26 Siren e27 Owl e28 Woah e29 Oh! e30 Chikil e31 Hey! e32 Out e33 Owl Up e34 Scream e35 Voice Loop (*2) e36 Kick Ambience e37 Reverse Tom
African/Middle Eastern/Australian/Other Percussion a01 Shaker a02-05 Djembe x 5 a06-F09 Talking Drum x 3 a10-F13 Afro Drum x 4 a14 Mesh Castanets a15 F15 a16 Bell Tree a17 Shagil x 2 a18-F20 Darbuka x 3 a21 F21 a22 F22 Doira x 2 a23 F23-F27 Doholla x 5	127-128 Room Tom x 2 129-130 Acoustic Tom x 2 131-132 TR-909 Tom x 2 133-134 TR-909 Tom x 2	L33 Vibra Slap L34-L38 Agogo Cabasa x 5 L39 L40-L45 Cuica x 6 L46-L52 Panderiro x 7 L53-L57 Surdo x 5 L58-L61 Tamborim x 4 L62-L65 Samba Whistle x 4 L66 Cox x 1 L67-L70 Berimbau x 4 L71-L74 Caixa x 4 L75 Rain Stick L76 Samba Bateria L77 Samba Loop (*2) L78 Shaker Loop (*2)	F28-F31 Reik Bendir x 4 F32 Ball Cymbal F33 Dawul F34 [Australia] F35 Clapstick F36 Boomerang F37 Bloom Bell F38 (Africa) F39 Afro Loop (*2)	J45-J46 Chanchan x 2 J47-J48 Ball Cymbal x 2 J49 Thai Gong J50-J51 Jaws Harp x 2	M24 Yang Qin [Southeast Asia] M25 Bonang M26 Gender M27 Saron M28 Angklung M29-M30 Gamelan x 2 M31 Triangle M32 Iron Hammer M33 Bamboo M34 Drip M35-M36 Synth Strings x 2 M37-M43 Brass x 7 M44-M52 Choir x 9 M53-M59 Bass x 7	d11-d12 Scratch Bass Drum x 2 d13 Scratch Snare d14 Jungle Hat d19-d21 High-Q x 3 d22 Air Blip d23 Techno Snap d24 Organ Chord d25 Distortion Guitar d26 Auh Voice d27 Techno Chord d28 Techno Scene d29 Synth Hi d36 Retro UFO d37 Meta Sweep d38 Bounce d39 Distortion Swish d40 PCM Press d41 Jungle Roll Kick d42 Jungle Roll Snare d43 Techno Loop (*2)	e11-d12 Scratch Bass Drum x 2 e14 Wah Guitar x 4 e15 Telephone x 2 e16 Natural Sounds, Human Voice e17 Doorbell e18 Dog Bark e19 Bird e20 Car Door e21 Car Stop e22 Horn e23 Punch e24 Machine Gun e25 Pistol e26 Siren e27 Owl e28 Woah e29 Oh! e30 Chikil e31 Hey! e32 Out e33 Owl Up e34 Scream e35 Voice Loop (*2) e36 Kick Ambience e37 Reverse Tom
Latin Percussion (Cuban, Brazilian) l01-L05 Bongo x 5 l06-L10 Conga x 8 l11-L18 Cowbell x 5 l19-L20 Claves x 2 l21-L22 Guiro l23 Maracas l24-L26 Shaker x 3 l27-L28 Tambourine x 2 l29-L32 Timbale x 4	127-128 Room Tom x 2 129-130 Acoustic Tom x 2 131-132 TR-909 Tom x 2 133-134 TR-909 Tom x 2	L33 Vibra Slap L34-L38 Agogo Cabasa x 5 L39 L40-L45 Cuica x 6 L46-L52 Panderiro x 7 L53-L57 Surdo x 5 L58-L61 Tamborim x 4 L62-L65 Samba Whistle x 4 L66 Cox x 1 L67-L70 Berimbau x 4 L71-L74 Caixa x 4 L75 Rain Stick L76 Samba Bateria L77 Samba Loop (*2) L78 Shaker Loop (*2)	F28-F31 Reik Bendir x 4 F32 Ball Cymbal F33 Dawul F34 [Australia] F35 Clapstick F36 Boomerang F37 Bloom Bell F38 (Africa) F39 Afro Loop (*2)	J45-J46 Chanchan x 2 J47-J48 Ball Cymbal x 2 J49 Thai Gong J50-J51 Jaws Harp x 2	M24 Yang Qin [Southeast Asia] M25 Bonang M26 Gender M27 Saron M28 Angklung M29-M30 Gamelan x 2 M31 Triangle M32 Iron Hammer M33 Bamboo M34 Drip M35-M36 Synth Strings x 2 M37-M43 Brass x 7 M44-M52 Choir x 9 M53-M59 Bass x 7	d11-d12 Scratch Bass Drum x 2 d13 Scratch Snare d14 Jungle Hat d19-d21 High-Q x 3 d22 Air Blip d23 Techno Snap d24 Organ Chord d25 Distortion Guitar d26 Auh Voice d27 Techno Chord d28 Techno Scene d29 Synth Hi d36 Retro UFO d37 Meta Sweep d38 Bounce d39 Distortion Swish d40 PCM Press d41 Jungle Roll Kick d42 Jungle Roll Snare d43 Techno Loop (*2)	e11-d12 Scratch Bass Drum x 2 e14 Wah Guitar x 4 e15 Telephone x 2 e16 Natural Sounds, Human Voice e17 Doorbell e18 Dog Bark e19 Bird e20 Car Door e21 Car Stop e22 Horn e23 Punch e24 Machine Gun e25 Pistol e26 Siren e27 Owl e28 Woah e29 Oh! e30 Chikil e31 Hey! e32 Out e33 Owl Up e34 Scream e35 Voice Loop (*2) e36 Kick Ambience e37 Reverse Tom
Tom-Tom t01-t04 Big Tom x 4 t05-t08 Studio Tom x 4 t09-t12 Jazz Tom x 4	127-128 Room Tom x 2 129-130 Acoustic Tom x 2 131-132 TR-909 Tom x 2 133-134 TR-909 Tom x 2	L33 Vibra Slap L34-L38 Agogo Cabasa x 5 L39 L40-L45 Cuica x 6 L46-L52 Panderiro x 7 L53-L57 Surdo x 5 L58-L61 Tamborim x 4 L62-L65 Samba Whistle x 4 L66 Cox x 1 L67-L70 Berimbau x 4 L71-L74 Caixa x 4 L75 Rain Stick L76 Samba Bateria L77 Samba Loop (*2) L78 Shaker Loop (*2)	F28-F31 Reik Bendir x 4 F32 Ball Cymbal F33 Dawul F34 [Australia] F35 Clapstick F36 Boomerang F37 Bloom Bell F38 (Africa) F39 Afro Loop (*2)	J45-J46 Chanchan x 2 J47-J48 Ball Cymbal x 2 J49 Thai Gong J50-J51 Jaws Harp x 2	M24 Yang Qin [Southeast Asia] M25 Bonang M26 Gender M27 Saron M28 Angklung M29-M30 Gamelan x 2 M31 Triangle M32 Iron Hammer M33 Bamboo M34 Drip M35-M36 Synth Strings x 2 M37-M43 Brass x 7 M44-M52 Choir x 9 M53-M59 Bass x 7	d11-d12 Scratch Bass Drum x 2 d13 Scratch Snare d14 Jungle Hat d19-d21 High-Q x 3 d22 Air Blip d23 Techno Snap d24 Organ Chord d25 Distortion Guitar d26 Auh Voice d27 Techno Chord d28 Techno Scene d29 Synth Hi d36 Retro UFO d37 Meta Sweep d38 Bounce d39 Distortion Swish d40 PCM Press d41 Jungle Roll Kick d42 Jungle Roll Snare d43 Techno Loop (*2)	e11-d12 Scratch Bass Drum x 2 e14 Wah Guitar x 4 e15 Telephone x 2 e16 Natural Sounds, Human Voice e17 Doorbell e18 Dog Bark e19 Bird e20 Car Door e21 Car Stop e22 Horn e23 Punch e24 Machine Gun e25 Pistol e26 Siren e27 Owl e28 Woah e29 Oh! e30 Chikil e31 Hey! e32 Out e33 Owl Up e34 Scream e35 Voice Loop (*2) e36 Kick Ambience e37 Reverse Tom
Snare s01 Standard Snare s11 Dance Snare s12 HipHop Snare 1 s13 HipHop Snare 2 s14 Dopin' Snare	127-128 Room Tom x 2 129-130 Acoustic Tom x 2 131-132 TR-909 Tom x 2 133-134 TR-909 Tom x 2	L33 Vibra Slap L34-L38 Agogo Cabasa x 5 L39 L40-L45 Cuica x 6 L46-L52 Panderiro x 7 L53-L57 Surdo x 5 L58-L61 Tamborim x 4 L62-L65 Samba Whistle x 4 L66 Cox x 1 L67-L70 Berimbau x 4 L71-L74 Caixa x 4 L75 Rain Stick L76 Samba Bateria L77 Samba Loop (*2) L78 Shaker Loop (*2)	F28-F31 Reik Bendir x 4 F32 Ball Cymbal F33 Dawul F34 [Australia] F35 Clapstick F36 Boomerang F37 Bloom Bell F38 (Africa) F39 Afro Loop (*2)	J45-J46 Chanchan x 2 J47-J48 Ball Cymbal x 2 J49 Thai Gong J50-J51 Jaws Harp x 2	M24 Yang Qin [Southeast Asia] M25 Bonang M26 Gender M27 Saron M28 Angklung M29-M30 Gamelan x 2 M31 Triangle M32 Iron Hammer M33 Bamboo M34 Drip M35-M36 Synth Strings x 2 M37-M43 Brass x 7 M44-M52 Choir x 9 M53-M59 Bass x 7	d11-d12 Scratch Bass Drum x 2 d13 Scratch Snare d14 Jungle Hat d19-d21 High-Q x 3 d22 Air Blip d23 Techno Snap d24 Organ Chord d25 Distortion Guitar d26 Auh Voice d27 Techno Chord d28 Techno Scene d29 Synth Hi d36 Retro UFO d37 Meta Sweep d38 Bounce d39 Distortion Swish d40 PCM Press d41 Jungle Roll Kick d42 Jungle Roll Snare d43 Techno Loop (*2)	e11-d12 Scratch Bass Drum x 2 e14 Wah Guitar x 4 e15 Telephone x 2 e16 Natural Sounds, Human Voice e17 Doorbell e18 Dog Bark e19 Bird e20 Car Door e21 Car Stop e22 Horn e23 Punch e24 Machine Gun e25 Pistol e26 Siren e27 Owl e28 Woah e29 Oh! e30 Chikil e31 Hey! e32 Out e33 Owl Up e34 Scream e35 Voice Loop (*2) e36 Kick Ambience e37 Reverse Tom
Hi-Hat Cymbal h01 Closed Hi-Hat [EXC 1] h02 Pedal Hi-Hat [EXC 1] h03 Open Hi-Hat [EXC 1] h04 Mute Hi-Hat [EXC 1] h05 808 Closed Hi-Hat [EXC 1] h06 808 Open Hi-Hat [EXC 1]	127-128 Room Tom x 2 129-130 Acoustic Tom x 2 131-132 TR-909 Tom x 2 133-134 TR-909 Tom x 2	L33 Vibra Slap L34-L38 Agogo Cabasa x 5 L39 L40-L45 Cuica x 6 L46-L52 Panderiro x 7 L53-L57 Surdo x 5 L58-L61 Tamborim x 4 L62-L65 Samba Whistle x 4 L66 Cox x 1 L67-L70 Berimbau x 4 L71-L74 Caixa x 4 L75 Rain Stick L76 Samba Bateria L77 Samba Loop (*2) L78 Shaker Loop (*2)	F28-F31 Reik Bendir x 4 F32 Ball Cymbal F33 Dawul F34 [Australia] F35 Clapstick F36 Boomerang F37 Bloom Bell F38 (Africa) F39 Afro Loop (*2)	J45-J46 Chanchan x 2 J47-J48 Ball Cymbal x 2 J49 Thai Gong J50-J51 Jaws Harp x 2	M24 Yang Qin [Southeast Asia] M25 Bonang M26 Gender M27 Saron M28 Angklung M29-M30 Gamelan x 2 M31 Triangle M32 Iron Hammer M33 Bamboo M34 Drip M35-M36 Synth Strings x 2 M37-M43 Brass x 7 M44-M52 Choir x 9 M53-M59 Bass x 7	d11-d12 Scratch Bass Drum x 2 d13 Scratch Snare d14 Jungle Hat d19-d21 High-Q x 3 d22 Air Blip d23 Techno Snap d24 Organ Chord d25 Distortion Guitar d26 Auh Voice d27 Techno Chord d28 Techno Scene d29 Synth Hi d36 Retro UFO d37 Meta Sweep d38 Bounce d39 Distortion Swish d40 PCM Press d41 Jungle Roll Kick d42 Jungle Roll Snare d43 Techno Loop (*2)	e11-d12 Scratch Bass Drum x 2 e14 Wah Guitar x 4 e15 Telephone x 2 e16 Natural Sounds, Human Voice e17 Doorbell e18 Dog Bark e19 Bird e20 Car Door e21 Car Stop e22 Horn e23 Punch e24 Machine Gun e25 Pistol e26 Siren e27 Owl e28 Woah e29 Oh! e30 Chikil e31 Hey! e32 Out e33 Owl Up e34 Scream e35 Voice Loop (*2) e36 Kick Ambience e37 Reverse Tom
Percussion p01 High Bongo p02 Low Bongo p03 Open High Conga p04 Mute High Conga p05 Low Conga p06 Cowbell p07 Claves p08 Long Guiro [EXC 2] p09 Short Guiro [EXC 2] p10 Maracas p11 Shaker p12 Tambourine p13 High Timbale p14 Low Timbale	127-128 Room Tom x 2 129-130 Acoustic Tom x 2 131-132 TR-909 Tom x 2 133-134 TR-909 Tom x 2	L33 Vibra Slap L34-L38 Agogo Cabasa x 5 L39 L40-L45 Cuica x 6 L46-L52 Panderiro x 7 L53-L57 Surdo x					

A "Hands On" Approach to Electronic Percussion.



The HPD-15 HandSonic® is an electronic percussion multi-pad designed to be played by hand or finger. Using V-Drums® triggering technology, this futuristic instrument allows hand percussionists to play up to 15 sounds naturally without using sticks.



A dynamic pad with V-Drums technology

Divided into 15 parts, the HPD-15's ultra-sensitive 10-inch rubber pad can be used to trigger up to 15 different sounds using techniques from hard conga slaps to the light finger touch needed for tabla performances. And because the main pad supports positional sensing, you can create timbre changes just by striking different areas of the pad.

Loaded with high-quality sounds

Divided into 15 parts, the HPD-15's ultra-sensitive 10-inch rubber pad can be used to trigger up to 15 different sounds using techniques from hard conga slaps to the light finger touch needed for tabla performances. And because the main pad supports positional sensing, you can create timbre changes just by striking different areas of the pad.

Expressive realtime control

The HPD-15's knobs can be used for controlling pitch, timbre and multi-effects, while dual ribbon controllers create realistic conga slides and make triggering guiro sounds more natural. You can even create rolls by pushing harder on the pads. The D Beam, on the other hand, uses an infrared light beam for adjusting pitch, filter cutoff and triggering sounds like a gong or a bell tone. An optional expression pedal may also be used.

Handy performance features

Perfect for practice or composition, the HPD-15's 4-part pattern sequencer provides 99 Preset and User patterns. And with MIDI In and Out, you can use the HandSonic as a sound module or as the ultimate controller for playing into your sequencer. Live performers will appreciate the ability to add an optional hi-hat controller and kick trigger, as well as the HPD-15's 1/4-inch Line input for blending in external sounds.



HANDSONIC HPD-15

REAR VIEW



SPECIFICATIONS

- **Maximum Polyphony** 64 voices • **Instruments** Pad Instruments: 600, Backing Instruments: 54 • **Preset Patches** 160 • **User Patches** 80 • **Patch Chains** 10 chains (32 steps per chain) • **Effect Type** Reverb, Multi-Effects • **Sequencer** Preset Patterns : 99, User Patterns: 99 (Maximum), Tracks: 4, Play Functions: OneShot, Loop, Tap, Resolution: 96 ticks per quarter note, Recording Method: Real-time • **Tempo** 20-240 • **Display** 16 characters, 2 lines (backlit LCD) • **Controls** Volume Knob, Realtime Modify Knob 1/2/3, Ribbon L/R, D Beam Controller • **Pad** 10 inches, 15 sections, Pressure-Sensitive
- **Connectors** Output Jacks (L/Mono, R), Phones Jack (stereo), Mix In Jack (stereo), Expression Pedal / Hi-Hat Control Jack, Trigger Input Jack (dual), Foot Switch Jack (dual), MIDI Connectors (IN, OUT/THRU) • **Output Impedance** 1k ohms • **Power Supply** AC Adaptor (DC 9V) • **Current Draw** 1000mA • **Dimensions** 406 (W) x 405 (D) x 98 (H) mm / 16 (W) x 16 (D) x 3-7/8 (H) inches • **Weight** 2.9 kg / 6 lbs 7 oz (Excluding AC Adaptor)
- **Accessories** AC Adaptor (ACI/ACB Series), Label

Preset Patches & Preset Instruments

PRESET PATCHES

LATIN P01 01 Conga P01 02 Bongo P01 03 Timbales P01 04 Latin Toys P01 05 CONGAbongo P01 06 TimbaleMix P01 07 Conga II P01 08 Bongo II P01 09 TimbalesII P01 10 BONGO-BRS P01 11 TimbaSong P01 12 Steel Drum P01 13 Pandeiro P01 14 Surdo P01 15 ESQUILA P01 16 Berimbau P01 17 PandeiroII P01 18 Surdo II P01 19 Brazil Mix P01 20 Perc Echos P01 21 SpaceConga P01 22 Boss Latin	AFRICAN P02 01 TalkingDrm P02 02 Djembe S P02 03 Djembe L P02 04 Frame Drum P02 05 Pot Drum P02 06 Kalimba P02 07 Log Drum P02 08 Balaphone P02 09 Gyili P02 10 Afro Zither P02 11 MunguDrum P02 12 AfricaToys P02 13 Gyili&Cng P02 14 NaturePerc P02 15 Gyil&Baph P02 16 TalkDrm II P02 17 PotDrum II	ASIAN P03 01 Tabla P03 02 Dholak P03 03 Madal P03 04 Dhol P03 05 DmOIndia P03 06 MadaTalan P03 07 Tabla II P03 08 Tabla III P03 09 TABLATIX P03 10 Sitar P03 11 Santoor/Maj P03 12 Santoor/Mh P03 13 Tambura P03 14 Darabukka P03 15 Reik P03 16 Doholia P03 17 Doira P03 18 Turk-Mitry P04 01 JAPAN P04 02 MATSURI P04 03 CHINA P04 04 Yang Qin P04 05 Korean4Drm P04 06 Gamelan	ORCH P05 01 Xylophone P05 02 Glockenspiel P05 03 Vibraphone P05 04 Marimba P05 05 Bs Marimba P05 06 JzBrush&Bs P05 07 Timpani P05 08 Orch Hit P05 09 LightOrch P05 10 OrchPerc P05 11 Aux Perc	DRUMS P06 01 Standard P06 02 JazzBrush P06 03 Analog P06 04 TR-909 P06 05 TR-909 P06 06 Studio P06 07 Rock Stage P06 08 Swing P06 09 Brushes P06 10 Orch Set P06 11 Mesh-Set P06 12 Hi-Boy P06 13 Low&Dry P06 14 Jazz Mix P06 15 JzBrush&Bs P06 16 BluesClub P06 17 DrumHorns P06 18 TechnoGate P06 19 SynthDrums P06 20 JunkyDrums P06 21 Brush Box	DANCE P07 01 Clap&Scrth P07 02 FILTERED P07 03 Trash Beat P07 04 LatinHouse P07 05 Techey P07 06 TechDance P07 07 EthnDance P07 08 Cosmo 21 P07 09 UndaGround P07 10 StreetBeat P07 11 909-2000 P07 12 AlienDance P07 13 TechNow P07 14 Sweep 808 P07 15 Revolution P07 16 Backbeat P07 17 AmberWater P07 18 SynthDrums P07 19 Dicoctia P07 20 Dance 6 P07 21 Lock Out	P07 23 DanceMenu1 P07 24 DanceMenu2 SFX P08 01 PsychoDrama P08 02 Forest P08 03 GrandBlue P08 04 NoiseSonic P08 05 ArpegPerc P08 06 CartoonFX P08 07 Silly FX P08 08 RobtMime P08 09 MetalMania P08 10 ChaosSoniq P08 11 SFX Menu 1 P08 12 SFX Menu 2 P08 13 SFX Menu 3 OTHERS P09 01 LasenWave P09 02 Heavy Gtr P09 03 Acous Bass P09 04 SHT01 Bass	P09 05 Flute P09 06 Syn String P09 07 Saw Wave P09 08 Juno Wave P09 09 Fairasia P09 10 Thick Pad P09 11 Calliope P09 12 Melody-808 LOOPS P10 01 Latin Loop P10 02 Samba Loop P10 03 Africaloop P10 04 IndianLoop P10 05 Asian Loop P10 06 FusionLoop P10 07 Dance Loop P10 08 Shot & Tap	P09 05 Flute P09 06 Syn String P09 07 Saw Wave P09 08 Juno Wave P09 09 Fairasia P09 10 Thick Pad P09 11 Calliope P09 12 Melody-808 OTHERS P10 01 Latin Loop P10 02 Samba Loop P10 03 Africaloop P10 04 IndianLoop P10 05 Asian Loop P10 06 FusionLoop P10 07 Dance Loop P10 08 Shot & Tap	SFX S23-S26 Shot S27-S36 Noise etc OTHERS T01-T05 Piano T06-T07 Organ T08-T08 Guitar T09-T41 Bass T42-T44 Strings T45-T50 Brass T51 Tenor sax T52 Flute T53-T58 Wave T59-T68 Synth
--	--	--	--	--	--	--	--	---	---

PRESET INSTRUMENTS

LATIN L01-L05, L07 Bongo Hi x 6 L06, L08 Bongo Lo x 2 L09-L18 Conga Hi x 12 L28-L29 Conga Lo x 10 L31-L34 Cowbell x 4 L35-L36 Claves x 2 L37-L40 Guiro x 4 L41 Maracas x 1 L42-L44 Shaker x 3 L45-L46 Tambourine x 2 L47-L59 Timbale x 13 L60 Vira-Slap x 1 L61-L62 Steel Drum x 2 L63-L69 Agogo x 7 L70 Cabasa x 1 L71-L78 Caca x 8 L79-L84 Pandeiro x 6 L85-L89 Surdo x 5 L90-L93 Tamborim x 4 L94-L96 Whuse x 3	L97 Caxixi x 1 L98-L03 Berimbau x 5 L04-L06 Caixa x 3 L07-L08 Rain Stick x 2 L09 SambaBateria x 1 L10-L11 SpaceConga x 2 L12-L13 F17-F20 AnalogPercs x 12 L14 F01 Shaker x 1 L15 F02-F07 Djembe x 6 L16 F08-F13 Small Djembe x 6 L17 F14-F16 TalkingDrm x 3 L18 F17-F20 Afro Drum x 4 L19 F21 Metal Casta x 1 L20 F22-F31 Pot Drum x 10 L21 F32 Kalimba x 1 L22-L24 Log Drum x 1 L25-L28 F34-F41 Gyili x 8 L29-L32 F42-F49 Balaphone x 8 L33-L34 F50 Afro Zither x 1	F51 Afro Feet x 1 F52 Alro Slomp x 1 F53-F54 Hand Drum x 2 F55-F57 Mungu x 3 F58 Clapstick x 1 F59 Boomerang x 1 F60 Bamboo x 1 F61 BloomBell x 1 INDIAN I01 Sarna Bell x 1 I02-I09 Tabla x 8 I10-I14 Dholak x 5 I15-I19 Dhol x 4 I20-I23 Madal x 4 I24 Khole x 1 I25-I28 Dhol x 4 I29-I30 Sitar x 2 I31-I32 Santoor x 2 I33-I34 Tambura x 2 I35 Bell Tree x 1	I36-I38 Sagat x 3 I39-I41 Darabukka x 3 I42-I43 Ddra x 2 I44-I49 Doholia x 6 I50-I53 Reik x 4 I54 Bendir x 2 I55 Dawal x 1 I56-I57 Hmrdlcmr x 2 ASIAN A01 Biwa x 1 A02 Altargane x 1 A03 Hyoshigi x 1 A04 Otkawa x 1 A05-A06 Tsuzumi x 2 A07-A08 Shime Taiko x 2 A09-A10 MatsuriTaiko x 2 A11-A12 Jang Gu x 1 A13-A15 Jang Gu x 1 A16-A17 Gangari x 2 A18-A20 Dan Gu x 3	A21-A23 Gu x 3 A24-A25 Tang Gu x 2 A26-A27 Hu Yin Luo x 2 A28 Xiao Bo x 1 A29 Xiao Bo x 1 A30 Large Tam Tam x 1 A31 Large Gong x 1 A32 Small Gong x 1 A33 Bend Gong x 1 A34 Yang Qin x 1 A35-A36 Flanger Cym x 2 A37 Rama Cymbal x 1 A38-A40 Chenchen x 3 A41-A43 Ball Cym x 3 A44 Thai Gong x 1 A45-A47 Jawsharp x 3 A48 Bonang x 1 A49 Saron x 1 A50 Jang-Gu x 1 A51 Angklung x 1 A52-A53 Gamelan x 2	ORCH O01 Sleigh Bell x 1 O02 Tree Chimes x 1 O03 O04 Triangle x 2 O05 Castanets x 1 O06-007 Wood Block x 2 O08 Slapstick x 1 O09-O10 Concert BsdR x 2 O11 Timpani x 1 O12 Perc Hit x 1 O13 O14 Cymbal Hit x 2 O15 Drmkaj Whstt x 1 O16 Glockenspiel x 1 O17 Vibraphone x 1 O18 Xylophone x 1 O19-O20 Marimba x 2 O21 Bass Marimba x 1 O22 Celesta x 1 O23 Tubular Bell x 1 O24 Glass x 1 O25 Iron Hammer x 1	DRUMS R01-R12 Kick x 12 R13-R16 Snare x 22 R17-R18 Kick x 2 R19-R22 Cymbal x 16 R23-R26 Wheel Pedal x 1 R27-R30 KckCymbal x 3 R31-R34 Voice Kick x 1 R35-R38 Voice Snare x 1 R39-R42 Voice HiHat x 1 R43-R56 Tom x 14 R57-R76 Hi-Hat x 22 R77-R96 Cymbal x 18 R97 Wheel Pedal x 1 R98-r01 KckCymbal x 3 r02 Voice Kick x 1 r03 Voice Snare x 1 r04 Voice HiHat x 1 DANCE D01-D05 Hand Clap x 5 D06-D12 Scratch x 7 D13-D16 Trash x 4 D17-D21 High-Q x 3 D22 Glass x 1 D23 Iron Hammer x 1	S23-S26 Shot S27-S36 Noise etc OTHERS T01-T05 Piano T06-T07 Organ T08-T08 Guitar T09-T41 Bass T42-T44 Strings T45-T50 Brass T51 Tenor sax T52 Flute T53-T58 Wave T59-T68 Synth
---	--	--	---	---	---	---	--

Options

Personal Monitor Amplifier PM-1



A Monitor Built for Electronic Percussion.

The PM-1 is the perfect monitoring system for Roland's SPD-Series and HPD-15 HandSonic. Precisely tuned for the needs of acoustic and electronic percussionists, the PM-1's 60-watt amplifier and 2-way speaker system sound great on stage or at home. And monitoring is easy, thanks to a smart angled design that even accommodates drum stands.



*Requires APC-33 Clamp Set.



Controls



Connectors

Pads

V-Pads™
PD-120/100/80R/80
Dual-Trigger Pads
PD-9/7



▲ PD-120

Single-Trigger Pad
PD-6

Extension pads for the SPD-S, SPD-20, and HPD-15, allowing users to trigger additional sounds using high-quality "mesh" or rubber drum heads. PD-120 and PD-100 pads available in red or purple.



▲ PD-9

Kick Triggers

V-Kicks
KD-120/80

KD-120 kick available in red or purple.

▶ KD-80



Kick Trigger Unit
KD-7

*Beater and connection cable included.
*Kick drum pedal not included and shown only for photography purposes.

▶ KD-7



Cymbals

V-Cymbals™
CY-12R/C, CY-14C,
CY-15R, CY-12H



▲ CY-12R/C

Dynamic crash, ride and hi-hat cymbals designed to faithfully re-create acoustic cymbal dimensions, movements and inertia.

Dual-Trigger Cymbal Pad
CY-6

Affordable dual-trigger crash/ride cymbal with natural "swinging" motion and super-accurate triggering.

Pad Stand

Pad Stand
PDS-15

Slant-type stand designed for hand percussion products like the HPD-15 and SPD-6.

▶ Setup Example
PDS-15 can be slanted to improve HPD-15's playability.



Acoustic Drum Triggers



Kick Trigger
RT-7K



Snare Trigger
RT-5S

*Trigger: 2 (head, rim)



Tom Trigger
RT-3T

Trigger MIDI Converter

Trigger MIDI Converter
TMC-6

An affordable way to play and trigger MIDI modules and samplers from an acoustic drum set, or expand the capabilities of an electronic set.



Others

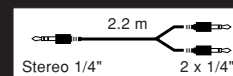


Hi-Hat Control Pedal
FD-7



Pedal Switch
DP-2

Connection Cable
PCS-31



Expression Pedal
EV-5



All Purpose Clamp
APC-33

Heavy-duty mounting clamp for use with the SPD-S/20/6 and the HPD-15.



Footswitch BOSS
FS-5U



Stereo Headphone
RH-50

Roland
WE DESIGN THE FUTURE

Visit us online at www.Roland.com

All specifications and appearances are subject to change.
All trademarks used in this catalog are the property of their respective companies.